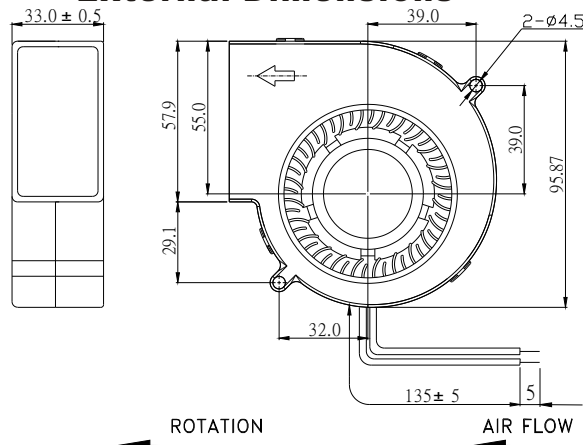


# ◀94X94X33mm Series▶



Spot cooling,also suitable for small space requirements, laptops PC and notebook,etc.,.

## External Dimensions



Frame:Plastic(UL:94v-0)  
Impeller:Plastic(UL:94v-0)  
Bearing:Ball bearing  
Lead wire:UL1007AWG24  
OPERATING TEMP\*:-10C~70C  
VOLTAGE AVAILABLE:12V  
\*:-10C~60C for fans with sleeve/ball combination bearings.

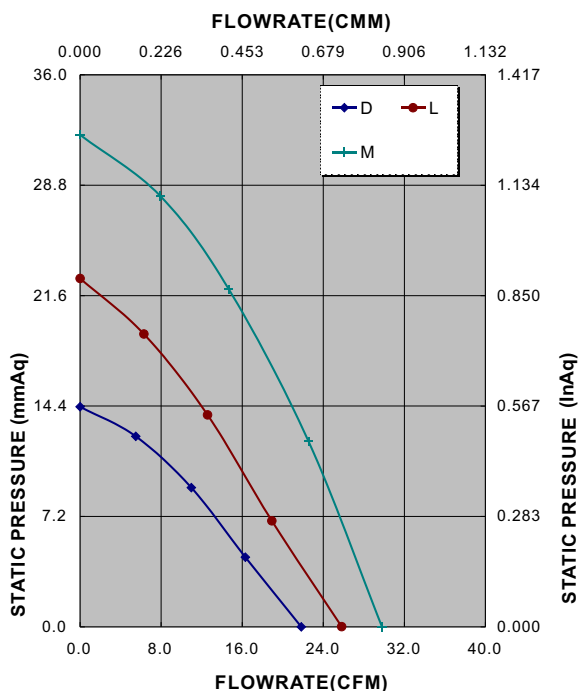
## Specifications(Nominal)

\*:Noise is measured at the distance of one(1) meter from the axis of intake.

Bearing type:   =Ball   =Sleeve   =1B1S   =Hypro bearing												
Frame size (mm)	Model No.	Bearing System Type	Rated Voltage (v)	Rated Current (A)	Rated Power (W)	Rated Speed (rpm)	Maximum AirFlow (CMM)   (CFM)		Maximum Pressure (InAq)   (mmAq)		Noise Level (dB/A)	Weight (g)
94X94X33	AB0912MB-Z0A		12	1.00	12.00	3400	0.839	29.80	1.284	32.09	50.5	140
	AB0912LB-Z00		12	0.57	6.84	3200	0.727	25.81	0.909	22.72	46.7	
	AB0912MB-Z01		12	0.90	10.80	3600	0.839	29.80	1.284	32.09	51.5	
	AB0912LB-Z01		12	0.57	6.84	3200	0.727	25.81	0.909	22.72	46.7	
	AB0912DB-Z01		12	0.41	4.92	2800	0.614	21.80	0.574	14.35	46.6	
Specifications subject to change without notice.												

Specifications subject to change without notice.

## Fan Performance Curve



\*Motor protective circuit and third lead wire functions

0	1	2	3	4	6	7	8	9	A	B
	✓	✓	✓							

\*Safety approvals

✓	✓						✓			

